

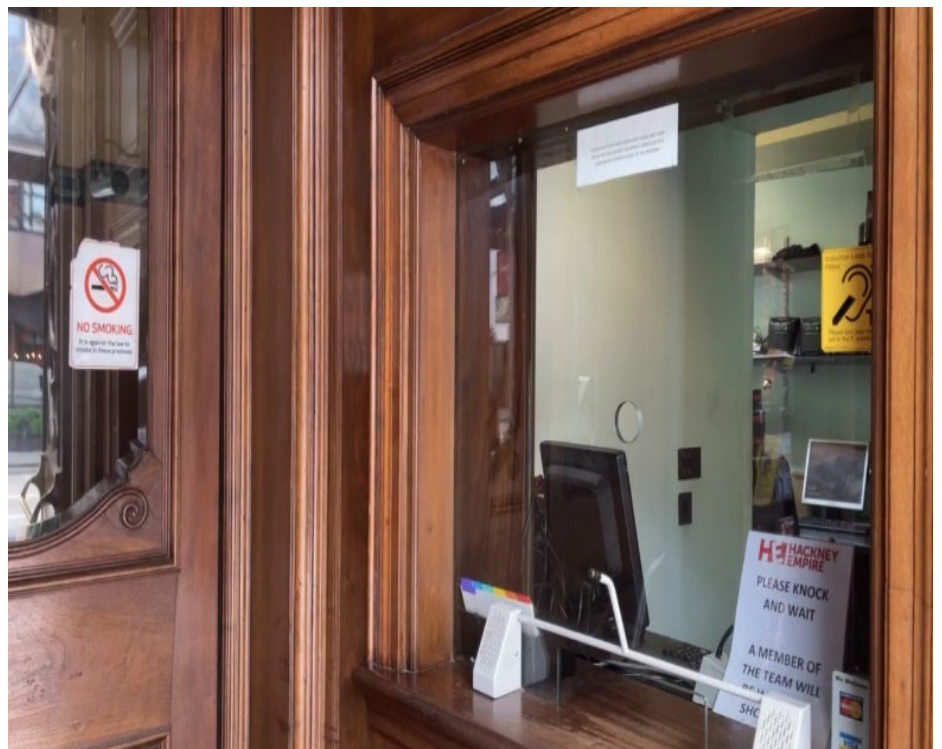
This is the outside of Hackney Empire.

The arrow points to the main doors that lead into the theatre.



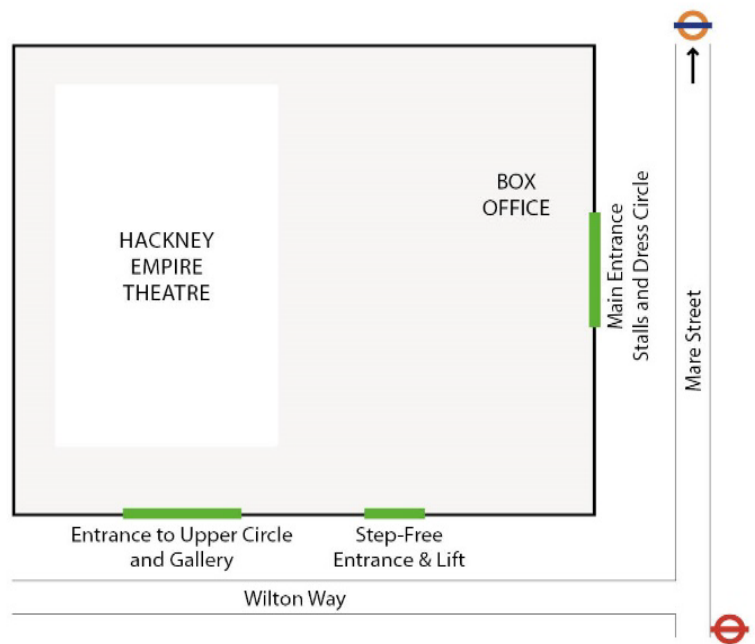
This is the Box Office where you can buy and collect your tickets.

If you already have your tickets you can queue up at your required entrance to get them scanned by a member of our Front of House Team.



Please use this map or the map on your tickets to find out where your entrance is.

Remember, screenshots of e-tickets can't be scanned so please have your e-tickets ready before you arrive!



 Hackney Central, Hackney Downs
 Bethnal Green  Hackney Town Hall

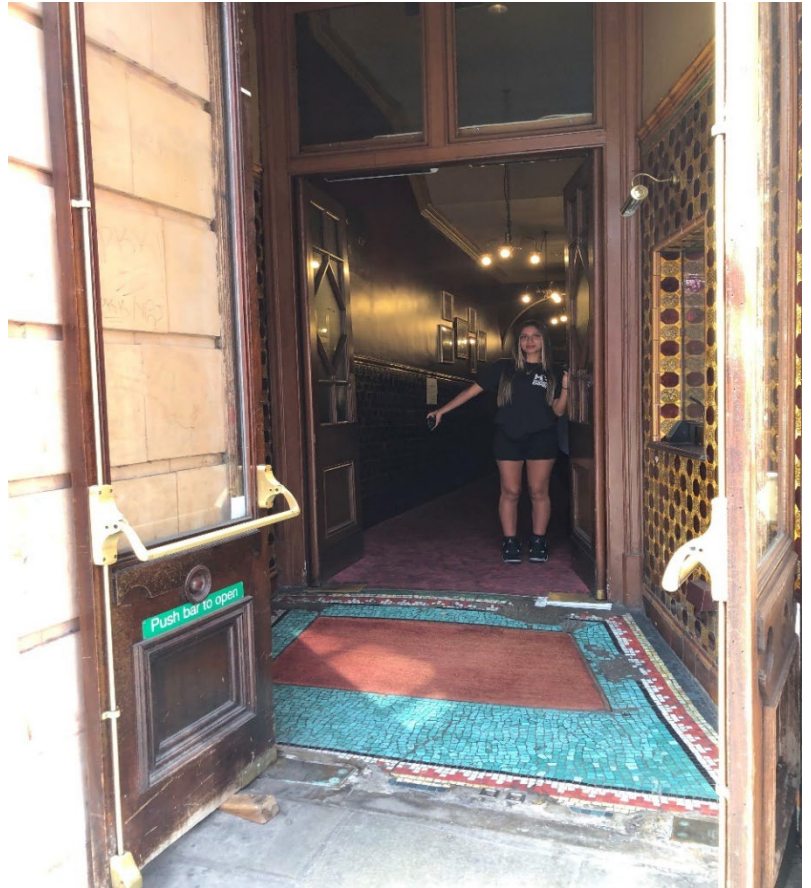
This is the main entrance into Hackney Empire, and your entrance for the Stalls and Dress Circle.

We have lift access to all floors through this main entrance.



If you're a wheelchair user, you can enter Hackney Empire using the ramp provided.

Someone from our Front of House Team will be on hand and happy to assist you!



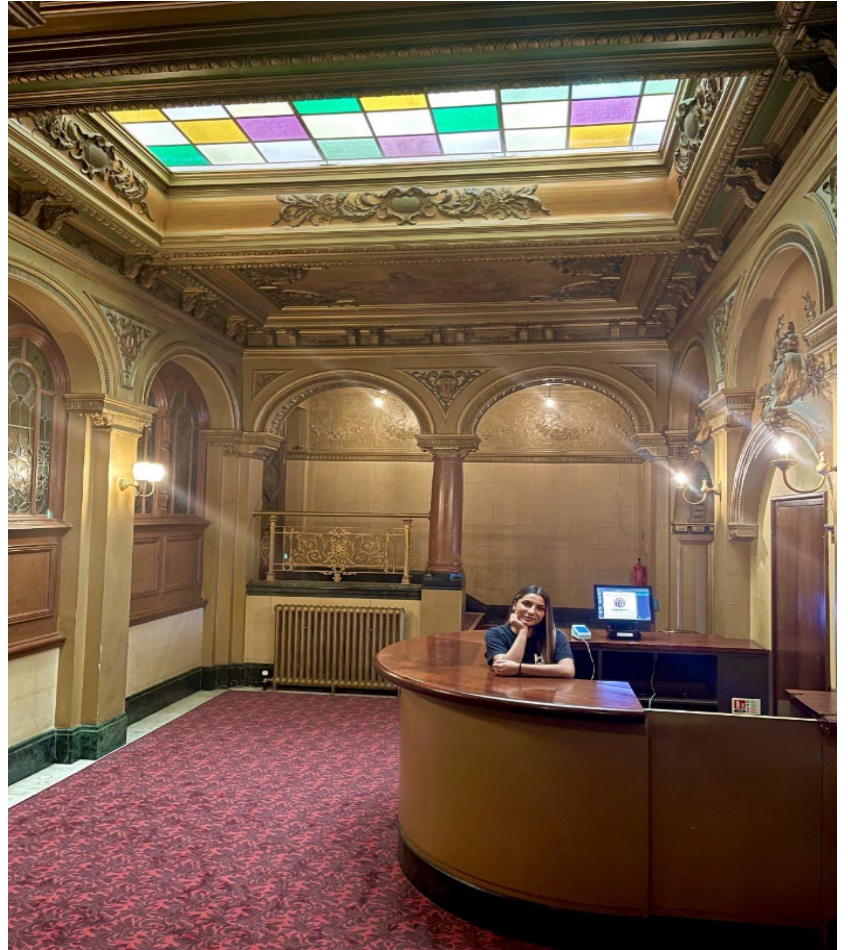
Once you've gone through the main doors you will be in the Foyer.

The Foyer can get very busy so the Front of House Team will direct you to the floor you're sitting on.



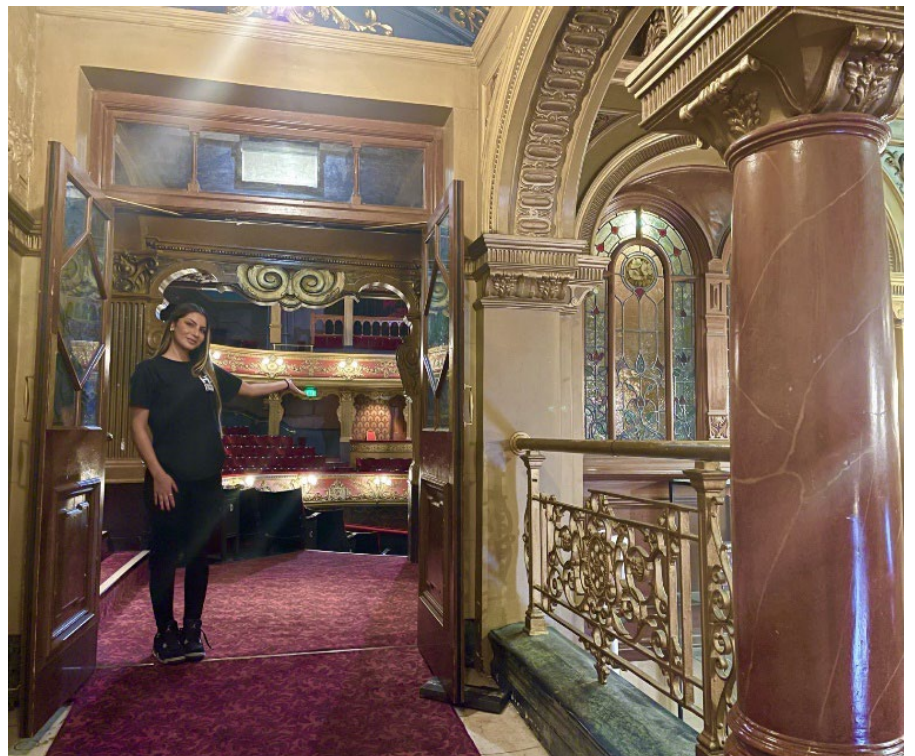
Once you're in the Foyer, make your way up the stairs straight in front of you – there are 25 stairs in total.

At the top of the stairs you'll find our champagne bar and the entrance to the Dress Circle.



A member of our Front of House Team, who'll be wearing a Hackney Empire t-shirt like this one, will be able to let you know where your seat is.

If you have any other questions, they're happy to help!



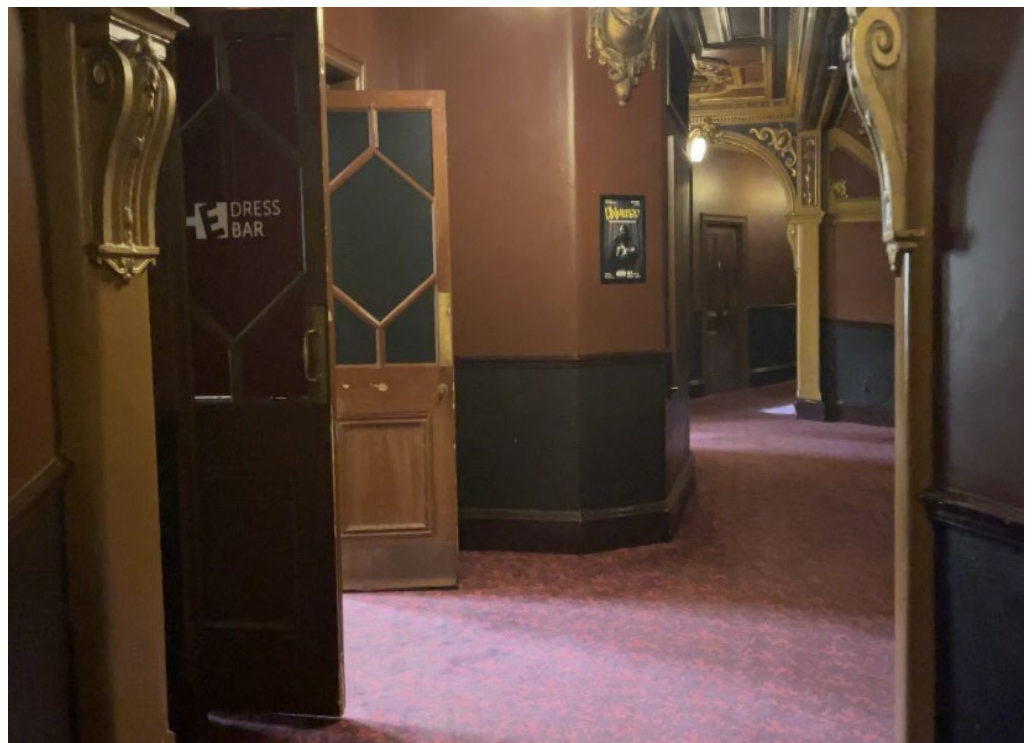
This is the Dress Circle, which bends around like a semi-circle.

Rows are lettered and seats are numbered. If you have any questions or need help, please ask a member of our Front of House Team.



Refreshments can be bought from the bar which is located at the back of the Dress Circle.

Please note that we do not sell hot food.



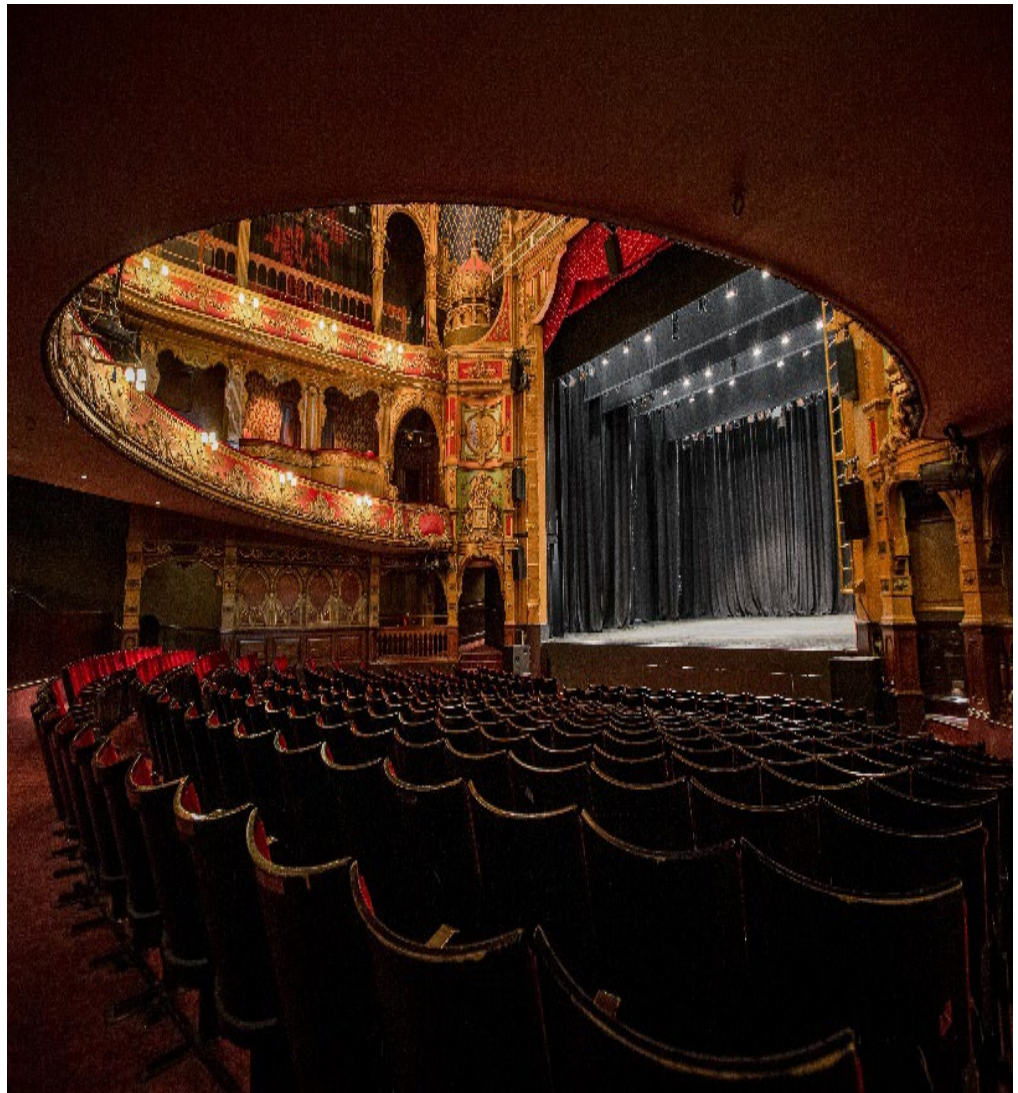
There are toilets on every floor of the theatre, look out for these signs on the wall that will direct you to the toilets you need.



Before the show starts there will be an announcement, letting you know that the show will start in 5 minutes and for you to find your seats. You must be seated before the show starts.

During the interval feel free to walk around and go to the toilet, bar and Foyer. If you want to go outside, make sure you have your ticket with you so that our security can let you back inside.

There will be an announcement to let you know that the interval is ending and you have a few minutes to get back to your seats before the curtain rises and the show starts again.



At the end of the show most people in the audience will clap, which we invite you to join in with. Once the curtain comes back down, people will start to make their way out of the theatre through the same entrance that you came in by.

